

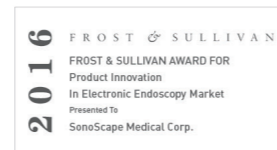
SonoScape

SONOWIED Sonographiesysteme



Company Milestone

- 2002: Company Founded in Shenzhen, China
- 2008: Received "European Entrepreneurial Company 2008" award from FROST & SULLIVAN
- 2009: Received "Product Quality Leadership Award 2009" from FROST & SULLIVAN
- 2011: Received the Reddot 2011 Product Design Award for S20 in Essen, Germany
- 2013: Received "Ultrasound Market Growth Leadership Award, 2013" from FROST & SULLIVAN
- 2014: Received the iF product design award 2014 for S9 in Munich, Germany
- 2014: Received "Company of the Year in Ultrasound Market, 2014" from FROST & SULLIVAN
- 2016: Received "Product innovation in Electronic Endoscopy Market" from FROST & SULLIVAN
- 2017: Received the iF product design award 2017 for X5 in Munich, Germany
- 2017: Listed on Shenzhen Stock Exchange on April



ISO 13485



SonoScape

SonoScape Medical Corp.
Yizhe Building, Yuquan Road, Shenzhen, 518051, China
Tel: +86-755-26722890 Fax: +86-755-26722850
Email: market@sonoscape.net www.sonoscape.com



P9
Handy Solution for
Your Confident
Diagnosis

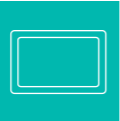
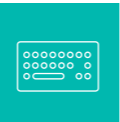
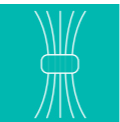





The P9 is a new color doppler ultrasound diagnostic system from Sonoscape. Ergonomically small and flexible in appearance while intrinsically strong in performance, the P9 expands the variety of advanced imaging functions to easily meet the needs of increasingly diversified clinical applications.

SONOWIE Sonography

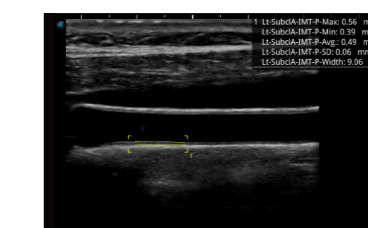


Comfort in Ingenious Design

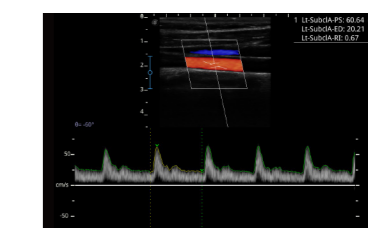
-  Large size monitor and sensitive touch screen
-  Built-in sliding keyboard
-  Cable management holder
-  Intuitive control panel and scientific division
-  Palm rest design
-  Large capacity built-in battery

Efficiency in Streamlined Workflow

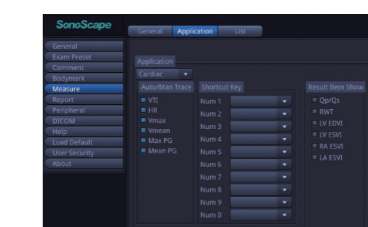
P9 inherits a high-end ultrasonic platform and is combined with a variety of workflow-enhanced technologies, such as user defined presets, intelligent storage, and one-key optimization, to create a stable working environment and a convenient operation experience for clinical diagnosis.



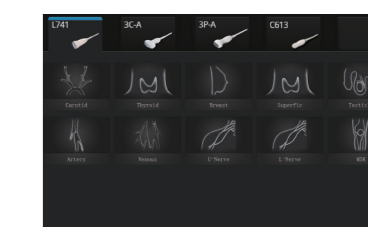
Auto IMT



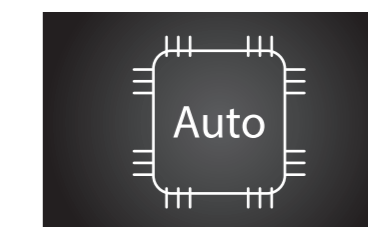
Auto Trace



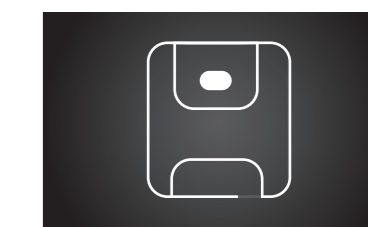
User-defined Operation



Quick Preset



One-key Optimization



Quick Storage and Transfer